



# NOTES & NETCORDS

Volume 35, Issue 33

THE OFFICIAL NEWSLETTER OF THE WTA

September 26, 2011

## IN THIS ISSUE

- 1 Quick Recap  
Upcoming Tournaments  
Upcoming Player Schedules
- 2 Weeks at No.1  
Ranking Movers  
Birthdays  
Withdrawals
- 3 2011 WTA Finals
- 4 2011 WTA By The Numbers
- 5 Calendar
- 6 This Week's Rankings  
Singles Top 100  
Doubles Top 50  
Prize Money Leaders
- 10 Tournament Draws  
Seoul, Guangzhou,  
Tokyo

## Breakthroughs In Seoul & Guangzhou

### Martínez Sánchez wins first WTA hardcourt title, Scheepers wins first WTA title of career

For the first time in more than five and a half years a Spaniard has won a hardcourt title on the WTA, as **María José Martínez Sánchez** captured the Hansol Korea Open in Seoul, not even losing a set en route. The 29-year-old beat 26-year-old Kazakh Galina Voskoboeva in a pair of tie-breaks in the final, 76(0) 76(2). Voskoboeva was playing her first WTA final.

Another drought was ended in Guangzhou, as **Chanelle Scheepers** became the first South African to win a WTA title since Amanda Coetzer won Acapulco over eight and a half years ago at Acapulco in 2003. Scheepers beat Slovakia's Magdalena Rybarikova to win it, 62 62.

Also, **Natalie Grandin** captured her first WTA doubles title in Seoul, with **Vladimira Uhlirova**.



No Spaniard had won a hardcourt title on the WTA since Anabel Medina Garrigues at Canberra in January 2006.  
© Korea Tennis Association

### Full Stories

Martínez Sánchez Wins Seoul: <http://www.wtatennis.com/news/20110925/martinez-sanchez-wins-first-hardcourt-title> 2256076 2462152  
Scheepers Wins Guangzhou: <http://www.wtatennis.com/news/20110924/scheepers-wins-first-wta-title-in-guangzhou> 2256076 2461152

## UPCOMING WEEKS ON THE WTA

### Tournaments

**Week of September 26**  
\$2,050,000 Toray Pan Pacific Open (Premier)  
Tokyo, Japan (Hard / Outdoors)  
Contact: Katie Spellman ([kspellman@wtatennis.com](mailto:kspellman@wtatennis.com))

**Week of October 3**  
\$4,500,000 China Open (Premier)  
Beijing, China (Hard / Outdoors)

**Week of October 10**  
\$220,000 Generali Ladies Linz (International)  
Linz, Austria (Hard / Indoors)  
\$220,000 HP Japan Women's Open Tennis (International)  
Osaka, Japan (Hard / Outdoors)

**Week of October 17**  
\$721,000 Kremlin Cup (Premier)  
Moscow, Russia (Hard / Indoors)  
\$220,000 BGL BNP Paribas Luxembourg Open (International)  
Luxembourg, Luxembourg (Hard / Indoors)

### Player Schedules: Top 25

- |                                     |                                  |
|-------------------------------------|----------------------------------|
| 1. <b>Caroline Wozniacki</b>        | Tokyo, Beijing, Istanbul         |
| 2. <b>Maria Sharapova</b>           | Tokyo, Beijing, Istanbul         |
| 3. <b>Victoria Azarenka</b>         | Tokyo, Beijing, Luxembourg       |
| 4. <b>Vera Zvonareva</b>            | Tokyo, Beijing, Moscow           |
| 5. Li Na                            | Beijing                          |
| 6. <b>Petra Kvitova</b>             | Tokyo, Beijing                   |
| 7. <b>Samantha Stosur</b>           | Tokyo, Beijing, Osaka, Moscow    |
| 8. Francesca Schiavone              | Beijing                          |
| 9. Kim Clijsters                    | -                                |
| 10. <b>Marion Bartoli</b>           | Tokyo, Beijing, Moscow           |
| 11. Andrea Petkovic                 | Beijing, Linz, Luxembourg        |
| 12. <b>Jelena Jankovic</b>          | Tokyo, Beijing, Moscow           |
| 13. <b>Agnieszka Radwanska</b>      | Tokyo, Beijing, Moscow           |
| 14. Serena Williams                 | Beijing                          |
| 15. <b>Peng Shuai</b>               | Tokyo, Beijing                   |
| 16. <b>Anastasia Pavlyuchenkova</b> | Tokyo, Beijing, Linz, Luxembourg |
| 17. Sabine Lisicki                  | Beijing, Linz, Luxembourg        |
| 18. Roberta Vinci                   | Beijing, Linz, Moscow            |
| 19. Svetlana Kuznetsova             | Beijing, Moscow                  |
| 20. <b>Julia Goerges</b>            | Tokyo, Beijing, Linz, Luxembourg |
| 21. <b>Ana Ivanovic</b>             | Tokyo, Beijing, Luxembourg       |
| 22. <b>Dominika Cibulkova</b>       | Tokyo, Beijing, Linz, Moscow     |
| 23. <b>Flavia Pennetta</b>          | Tokyo, Beijing, Linz, Luxembourg |
| 24. Yanina Wickmayer                | Luxembourg                       |
| 25. Daniela Hantuchova              | Beijing, Linz, Luxembourg        |
| ** 104. Venus Williams              | -                                |

## WEEKS AT NO.1

### Wozniacki hits 50, Huber hits 150

**Caroline Wozniacki** spends her 50th week at No.1 in singles. Her first 18 weeks there came between October 11, 2010 and February 13, 2011, and after Kim Clijsters spent a week there, she is now in her second stint (this is her 32nd straight week there).

**Liesel Huber** had 134 weeks at No.1 from November 12, 2007 to June 6, 2010 and 13 more from August 2 to October 31, 2010. She returned there on September 12, 2011. This is week No.150.

### No.1 SINGLES RANKING HOLDERS

Steffi Graf	*377 weeks	August 17, 1987
Martina Navratilova	332 weeks	July 10, 1978
Chris Evert	260 weeks	November 3, 1975
Martina Hingis	209 weeks	March 31, 1997
Monica Seles	178 weeks	March 11, 1991
Serena Williams	123 weeks	July 8, 2002
Justine Henin	117 weeks	October 20, 2003
Lindsay Davenport	98 weeks	October 12, 1998
<b>Caroline Wozniacki</b>	<b>50 weeks</b>	<b>October 11, 2010</b>
Amélie Mauresmo	39 weeks	September 13, 2004
Dinara Safina	26 weeks	April 20, 2009
Tracy Austin	21 weeks	April 7, 1980
Kim Clijsters	20 weeks	August 11, 2003
Jelena Jankovic	18 weeks	August 11, 2008
Jennifer Capriati	17 weeks	October 15, 2001
Maria Sharapova	17 weeks	August 22, 2005
Ana Ivanovic	12 weeks	June 9, 2008
Arantxa Sánchez-Vicario	12 weeks	February 6, 1995
Venus Williams	11 weeks	February 25, 2002
Evonne Goolagong	2 weeks	April 26, 1976

\* The all-time record for most weeks at No.1 for both men and women

### No.1 DOUBLES RANKING HOLDERS

Martina Navratilova	*237 weeks	September 10, 1984
Cara Black	163 weeks	October 17, 2005
<b>Liesel Huber</b>	<b>150 weeks</b>	<b>November 12, 2007</b>
Natasha Zvereva	124 weeks	October 7, 1991
Lisa Raymond	117 weeks	June 12, 2000
Arantxa Sánchez-Vicario	111 weeks	October 19, 1992
Paola Suárez	87 weeks	September 9, 2002
Gigi Fernandez	80 weeks	March 4, 1991
Helena Sukova	68 weeks	February 5, 1990
Jana Novotna	67 weeks	August 27, 1990
Virginia Ruano Pascual	65 weeks	September 8, 2003
Samantha Stosur	61 weeks	February 6, 2006
Pam Shriver	48 weeks	March 18, 1985
Ai Sugiyama	45 weeks	October 23, 2000
Martina Hingis	35 weeks	June 8, 1998
Lindsay Davenport	32 weeks	October 20, 1997
Gisela Dulko	24 weeks	November 1, 2010
Flavia Pennetta	18 weeks	February 28, 2011
Julie Halard-Decugis	14 weeks	September 11, 2000
Kveta Peschke	10 weeks	July 4, 2011
Katarina Srebotnik	10 weeks	July 4, 2011
Anna Kournikova	10 weeks	November 22, 1999
Serena Williams	8 weeks	June 7, 2010
Venus Williams	8 weeks	June 7, 2010
Corina Morariu	7 weeks	April 3, 2000
Kim Clijsters	4 weeks	August 4, 2003
Larisa Neiland	4 weeks	January 27, 1992
Rennae Stubbs	3 weeks	August 21, 2000

\* No.2 all-time for both men and women, after John McEnroe's 270

## RANKING MOVERS

Notable singles ranking movers the week of September 26, 2011

**Chanelle Scheepers (RSA)**

**No.73 to No.41**

**Top 50 debut**; shatters previous career-high of No.65 after first WTA title at Guangzhou, having never reached a semifinal before

**Petra Martic (CRO)**

**No.55 to No.47**

**Top 50 debut**; young Croat jumps past previous career-high No.54 and into new ranking class after reaching Guangzhou quarterfinals

## HAPPY BIRTHDAY TO YOU!

Best wishes to those celebrating birthdays this week...

<b>Williams, Serena (USA)</b>	<b>September 26, 1981</b>
Halep, Simona (ROU)	September 27, 1991
Puchkova, Olga (RUS)	September 27, 1987
Buyukakcay, Cagla (TUR)	September 28, 1989
Date-Krumm, Kimiko (JPN)	September 28, 1970
Barrois, Kristina (GER)	September 30, 1981
Pous-Tio, Laura (ESP)	October 1, 1984



Serena Williams, who reached the final of the US Open in only her second Grand Slam back from almost a year out of the game, turns 30 on Monday.  
© Getty Images

## WITHDRAWALS

### Tokyo

<b>Clijsters, Kim (BEL)</b>	Abdominal muscle injury
<b>Domínguez Lino, Lourdes (ESP)</b>	Right foot injury
<b>Errani, Sara (ITA)</b>	Personal reasons
<b>Halep, Simona (ROU)</b>	Right Achilles injury
<b>Li, Na (CHN)</b>	Right knee injury
<b>Mattek-Sands, Bethanie (USA)</b>	Right shoulder injury
<b>Mirza, Sania (IND)</b>	Left knee injury
<b>Pervak, Ksenia (RUS)</b>	Left shoulder injury
<b>Petkovic, Andrea (GER)</b>	Right knee injury
<b>Schiavone, Francesca (ITA)</b>	Personal reasons
<b>Vesnina, Elena (RUS)</b>	Left wrist injury
<b>Vinci, Roberta (ITA)</b>	Right knee injury
<b>Wickmayer, Yanina (BEL)</b>	Personal reasons
<b>Williams, Serena (USA)</b>	Medical reasons
<b>Williams, Venus (USA)</b>	Sjögren's syndrome



## 2011 WTA FINALS (as of September 26, 2011)

Week of	Level	Tournament	Singles Final	Doubles Final
<b>JANUARY 3</b>				
Brisbane-AUS	Int.	\$220,000 Brisbane International (HO)	Kvitova d. Petkovic 61 63	Kleybanova/Pavlyuchenkova d. Jans/Rosolska 63 75
Auckland-NZL	Int.	\$220,000 ASB Classic (HO)	Arn d. (2) Wickmayer 63 63	(1) Peschke/Srebotnik d. Anvdsson/Erakovic 63 60
<b>JANUARY 10</b>				
Sydney-AUS	Pre.	\$618,000 Medibank International Sydney (HO)	(8) Li d. (3) Clijsters 76(3) 63	Benesova/Zahlavova S d. (3) Peschke/Srebotnik 46 64 107
Hobart-AUS	Int.	\$220,000 Moorilla Hobart International (HO)	(6) Groth d. Mattek-Sands 64 63	(3) Errani/Vinci d. K.Bondarenko/Dekmeijere 63 75
<b>JANUARY 17</b>				
Melbourne-AUS	GS	\$9,264,098 Australian Open (HO)	(3) Clijsters d. (9) Li 36 63 63	(1) Dulko/Pennetta d. (12) Azarenka/Kirilenko 26 75 61
<b>FEBRUARY 7</b>				
Paris-FRA	Pre.	\$618,000 Open GDF SUEZ (HI)	(4) Kvitova d. (1) Clijsters 64 63	(3) Mattek-S/Shughnessy d. Dushevina/Makarova 64 62
Pattaya City-THA	Int.	\$220,000 PTT Pattaya Open (HO)	(4) Hantuchova d. (8) Errani 60 62	(1) Errani/Vinci d. Sun/Zheng 36 63 105
<b>FEBRUARY 14</b>				
Dubai-UAE	Pre.	\$2,050,000 Dubai Duty Free Tennis Champ's (HO)	(1) Wozniacki d. (16) Kuznetsova 61 63	(2) Huber/Martinez S d. (1) Peschke/Srebotnik 76(5) 63
Memphis, TN-USA	Int.	\$220,000 Cellular South Cup (HI)	Rybarikova d. (6) Marino 62 ret.	(2) Govortsova/Kudryavtseva d. (4) Hlavackova/Hrad'a 63 46 108
Bogotá-COL	Int.	\$220,000 XIX Copa BBVA Colsanitas (RCO)	(7) Dominguez Lino d. Johansson 26 63 62	(1) Gallovits-H/Medina G d. Fichman/Pous-T 26 76(6) 119
<b>FEBRUARY 21</b>				
Doha-QAT	Pre.	\$721,000 Qatar Ladies Open (HO)	(2) Zvonareva d. (1) Wozniacki 64 64	(1) Peschke/Srebotnik d. (2) Huber/Petrova 75 67(2) 108
Acapulco-MEX	Int.	\$220,000 Abierto Mexicano TELCEL (RCO)	(4) Dulko d. (6) Parra Santonja 63 76(5)	Koryttseva/Olaru d. Dominguez L/Parra S 36 61 104
<b>FEBRUARY 28</b>				
Monterrey-MEX	Int.	\$220,000 Whirlpool Monterrey Open (HO)	(2) Pavlyuchenkova d. (1) Jankovic 26 62 63	(1) Benesova/Zahlavova S d. (2) Groenefeld/King 67(8) 62 106
Kuala Lumpur-MAS	Int.	\$220,000 BMW Malaysian Open (HO)	Dokic d. (5) Safarova 26 76(9) 64	(WC) Safina/Voskoboeva d. Lertcheewakarn/Moore 75 26 105
<b>MARCH 7</b>				
Indian Wells, CA-USA	Pre.	\$4,500,000 BNP Paribas Open (HO)	(1) Wozniacki d. (15) Bartoli 61 26 63	Mirza/Vesnina d. (8) Mattek-S/Shughnessy 60 75
<b>MARCH 21</b>				
Miami, FL-USA	Pre.	\$4,500,000 Sony Ericsson Open (HO)	(8) Azarenka d. (16) Sharapova 61 64	Hantuchova/A.Radwanska d. (3) Huber/Petrova 76(5) 26 108
<b>APRIL 4</b>				
Charleston, SC-USA	Pre.	\$721,000 Family Circle Cup (GCO)	(1) Wozniacki d. Vesnina 62 63	Mirza/Vesnina d. (4) Mattek-S/Shughnessy 64 64
Marbella-ESP	Int.	\$220,000 Andalucia Tennis Experience (RCO)	(1) Azarenka d. (Q) Begu 63 62	(3) Llagostera V/Parra S d. (1) Errani/Vinci 36 64 105
<b>APRIL 18</b>				
Stuttgart-GER	Pre.	\$721,000 Porsche Tennis Grand Prix (RCO)	Goerges d. (1) Wozniacki 76(3) 63	(WC) Lisicki/Stosur d. Barrois/Woehr 61 76(5)
Fès-MAR	Int.	\$220,000 GP de SAR La Princesse Lalla Meryem (RCO)	Brianti d. (7) Halep 64 63	(1) Hlavackova/Voracova d. Bratchikova/Klemenschits 63 64
<b>APRIL 25</b>				
Estoril-POR	Int.	\$220,000 Estoril Open (RCO)	Medina Garrigues d. Barrois 61 62	Kleybanova/Voskoboeva d. Daniilidou/Krajcek 64 62
Barcelona-ESP	Int.	\$220,000 Barcelona Ladies Open (RCO)	(6) Vinci d. Hradecka 46 62 62	(1) Benesova/Zahlavova S d. (3) Grandin/Uhlirova 57 64 119
<b>MAY 2</b>				
Madrid-ESP	Pre.	\$4,500,000 Mutua Madrid Open (RCO)	(16) Kvitova d. (4) Azarenka 76(3) 64	(5) Azarenka/Kirilenko d. (2) Peschke/Srebotnik 64 63
<b>MAY 9</b>				
Rome-ITA	Pre.	\$2,050,000 Internazionali BNL d'Italia (RCO)	(7) Sharapova d. (6) Stosur 62 64	Peng/Zheng d. (3) King/Shvedova 62 63
<b>MAY 16</b>				
Brussels-BEL	Pre.	\$618,000 Estoril Open (RCO)	(1) Wozniacki d. (8) Peng 26 63 63	Hlavackova/Voskoboeva d. (2) Jans/Rosolska 36 60 105
Strasbourg-FRA	Int.	\$220,000 Internationaux de Strasbourg (RCO)	(2) Petkovic d. (1) Bartoli 64 10 ret.	(4) Amanmuradova/Chuang d. (2) Grandin/Uhlirova 64 57 102
<b>MAY 23</b>				
Paris-FRA	GS	\$9,938,926 Roland Garros (RCO)	(6) Li d. (5) Schiavone 64 76(0)	Hlavackova/Hradecka d. (7) Mirza/Vesnina 64 63
<b>JUNE 6</b>				
Copenhagen-DEN	Int.	\$220,000 e-Boks Sony Ericsson Open (HO)	(1) Wozniacki d. (4) Safarova 61 64	(2) Larsson/Woehr d. Mladenovic/Piter 63 63
Birmingham-GBR	Int.	\$220,000 AEGON Classic (GO)	Lisicki d. (4) Hantuchova 63 62	(2) Govortsova/Kudryavtseva d. (3) Errani/Vinci 16 61 105
<b>JUNE 13</b>				
Eastbourne-GBR	Pre.	\$618,000 AEGON International (GO)	(6) Bartoli d. (5) Kvitova 61 46 75	(1) Peschke/Srebotnik d. (2) Huber/Raymond 63 60
's-Hertogenbosch-NED	Int.	\$220,000 UNICEF Open (GO)	(7) Vinci d. Dokic 67(7) 63 75	(4) Zahlavova S/Zakopalova d. Cibulkova/Pennetta 16 64 107
<b>JUNE 20</b>				
London-GBR	GS	\$9,781,631 Wimbledon (GO)	(8) Kvitova d. (5) Sharapova 63 64	(2) Peschke/Srebotnik d. Lisicki/Stosur 63 61
<b>JULY 4</b>				
Bastad-SWE	Int.	\$220,000 Collector Swedish Open (RCO)	(8) Hercog d. Larsson 64 75	Dominguez L/Martinez S d. (3) Llagostera V/Parra S 63 63
Budapest-HUN	Int.	\$220,000 POLI-FARBE Budapest Grand Prix (RCO)	(1) Vinci d. (7) Begu 64 16 64	(1) Medina G/Rosolska d. (2) Grandin/Uhlirova 62 62
<b>JULY 11</b>				
Bad Gastein-AUT	Int.	\$220,000 NÜRNBERGER Gastein Ladies (RCO)	MartínezSánchez d. (WC)Mayr-Achleitner 60 75	Birnerova/Hradecka d. Gajdosova/Goerges 46 62 1210
Palermo-ITA	Int.	\$220,000 XXIV SNAI Open (RCO)	(5) Medina Garrigues d. (7) Hercog 63 62	(1) Errani/Vinci d. (2) Hlavackova/Zakopalova 75 61
<b>JULY 18</b>				
Baku-AZE	Int.	\$220,000 Baku Cup (HO)	(1) Zvonareva d. (7) Pervak 61 64	(2) Koryttseva/Poutchek d. (1) Niculescu/Voskoboeva 63 26 108
<b>JULY 25</b>				
Stanford, CA-USA	Pre.	\$721,000 Bank of the West Classic (HO)	S.Williams d. (3) Bartoli 75 61	(2) Azarenka/Kirilenko d. (1) Huber/Raymond 61 63
College Park, MD-USA	Int.	\$220,000 Citi Open (HO)	(2/WC) Petrova d. (1) Peer 75 62	(1) Mirza/Shvedova d. (2) Govortsova/Kudryavtseva 63 63
<b>AUGUST 1</b>				
Carlsbad, CA-USA	Pre.	\$721,000 Mercury Insurance Open (HO)	(3) A.Radwanska d. (1) Zvonareva 63 64	(1) Peschke/Srebotnik d. Kops-Jones/Spears 60 62
<b>AUGUST 8</b>				
Toronto-CAN	Pre.	\$2,050,000 Rogers Cup (HO)	S.Williams d. (10) Stosur 64 62	(3) Huber/Raymond d. (4) Azarenka/Kirilenko w/o
<b>AUGUST 15</b>				
Cincinnati, OH-USA	Pre.	\$2,050,000 Western & Southern Open (HO)	(4/WC) Sharapova d. (13) Jankovic 46 76(3) 63	(3) King/Shvedova d. Grandin/Uhlirova 64 36 119
<b>AUGUST 22</b>				
New Haven, CT-USA	Pre.	\$618,000 New Haven Open at Yale (HO)	(1) Wozniacki d. (Q) Cetkovska 64 61	(3) Chuang/Govortsova d. Errani/Vinci 75 62
Dallas, TX-USA	Int.	\$220,000 Texas Tennis Open (HO)	(5) Lisicki d. (Q) Rezaei 62 61	Brianti/Cirstea d. Cornet/Parmentier 75 63
<b>AUGUST 29</b>				
New York, NY-USA	GS.	\$11,018,000 US Open (HO)	(9) Stosur d. (28) S.Williams 62 63	(4) Huber/Raymond d. (3) King/Shvedova 46 76(5) 76(3)
<b>SEPTEMBER 12</b>				
Québec City-CAN	Int.	\$220,000 Bell Challenge (HI)	(6) Zahlavova Strycova d. Erakovic 46 61 60	(1) Kops-Jones/Spears d. Hampton/Tatishvili 61 36 106
Tashkent-UZB	Int.	\$220,000 Tashkent Open (HO)	(1) Pervak d. Birnerova 63 61	(2) Daniilidou/Diatchenko d. Kichenok/Kichenok 64 63
<b>SEPTEMBER 19</b>				
Seoul-KOR	Int.	\$220,000 Hansol Korea Open (HO)	(6) MartínezSánchez d. Voskoboeva 76(0) 76(2)	(1) Grandin/Uhlirova d. (2) Dushevina/Voskoboeva 76(5) 64
Guangzhou-CHN	Int.	\$220,000 WANLIMA G'zhou Int'l Women's Open (HO)	(7) Scheepers d. (8) Rybarikova 62 62	Hsieh/S.Zheng d. C.Chan/Han 62 61

## 2011 WTA BY THE NUMBERS (as of September 26, 2011)

### Singles winners by seed

No.1 (10)	Azarenka (Marbella), Pervak (Tashkent), Vinci (Budapest), Wozniacki (Dubai, Indian Wells, Charleston, Brussels, Copenhagen, New Haven), Zvonareva (Baku)
No.2 (4)	Pavlyuchenkova (Monterrey), Petkovic (Strasbourg), Petrova (College Park), Zvonareva (Doha)
No.3 (2)	Clijsters (Australian Open), A.Radwanska (Carlsbad)
No.4 (4)	Dulko (Acapulco), Hantuchova (Pattaya City), Kvitova (Paris [Indoors]), Sharapova (Cincinnati)
No.5 (1)	Medina Garrigues (Palermo)
No.6 (6)	Bartoli (Eastbourne), Groth (Hobart), Li (Roland Garros), Martínez Sánchez (Seoul), Vinci (Barcelona), Zahlavova Strycova (Québec City)
No.7 (4)	Dominguez Lino (Bogotá), Scheepers (Guangzhou), Sharapova (Rome), Vinci (*s-Hertogenbosch)
No.8 (4)	Azarenka (Miami), Hercog (Bastad), Kvitova (Wimbledon), Li (Sydney)
No.9 (1)	Stosur (US Open)
No.16 (1)	Kvitova (Madrid)
Uns. (11)	Arn (Auckland), Brianti (Fès), Dokic (Kuala Lumpur), Goerges (Stuttgart), Kvitova (Brisbane), Lisicki (Birmingham), Martínez Sánchez (Bad Gastein), Medina Garrigues (Estoril), Rybarikova (Memphis), S.Williams (Stanford, Toronto)

### Winners & Runners-Up by country (2010: players from 21 countries won titles)

ARG (1-0), AUS (3-3), AUT (0-1), BEL (1-3), BLR (2-1), CAN (0-1), CHN (2-2), CZE (5-6), DEN (6-2), ESP (5-1), FRA (1-4), GER (3-2), HUN (1-0), ISR (0-1), ITA (4-2), KAZ (0-1), NZL (0-1), POL (1-0), ROU (0-3), RSA (1-0), RUS (7-6), SLO (1-1), SRB (0-2), SVK (2-2), SWE (0-1), USA (2-2)

### Most singles titles (2010: 6 - Wozniacki)

6 - **Wozniacki** (Dubai, Indian Wells, Charleston, Brussels, Copenhagen, New Haven)

### Most doubles titles (2010: 8 - Dulko)

5 - **Peschke & Srebotnik** (Auckland, Doha, Eastbourne, Wimbledon, Carlsbad)

### Fewest games lost in winning singles title (2010: 15 - Groth @ Guangzhou)

13 - Lisicki @ Dallas

### Longest singles match win streak (2010: 15 - V.Williams)

12 - Clijsters (Won Australian Open, 2-0 in Fed Cup, R-Up Paris [Indoors]), S.Williams (Won Stanford, Won Toronto, 1-0 in Cincinnati)

### First-time singles titles - 5 times (2010: 9 times)

Brianti (Fès), Hercog (Bastad), Pervak (Tashkent), Scheepers (Guangzhou), Zahlavova Strycova (Québec City)

### Lowest-ranked player to win a singles title (2010: No.151 Paszek @ Québec City)

No.169 - S.Williams @ Stanford

### Youngest and oldest singles winners

Pavlyuchenkova @ Monterrey (19y 8m 3d) / Arn @ Auckland (31y 8m 21d)

### Most games played in one singles match (2010: 41)

47 - Schiavone d. Kuznetsova 64 16 1614 (Australian Open 4r; saved 6mp)  
\*\* at 4:44, second-longest match in Open Era (longest Grand Slam match in Open Era)

### Longest singles tie-break (2010: 15-13 - Kleybanova d. Pervak 67(13) 61 62)

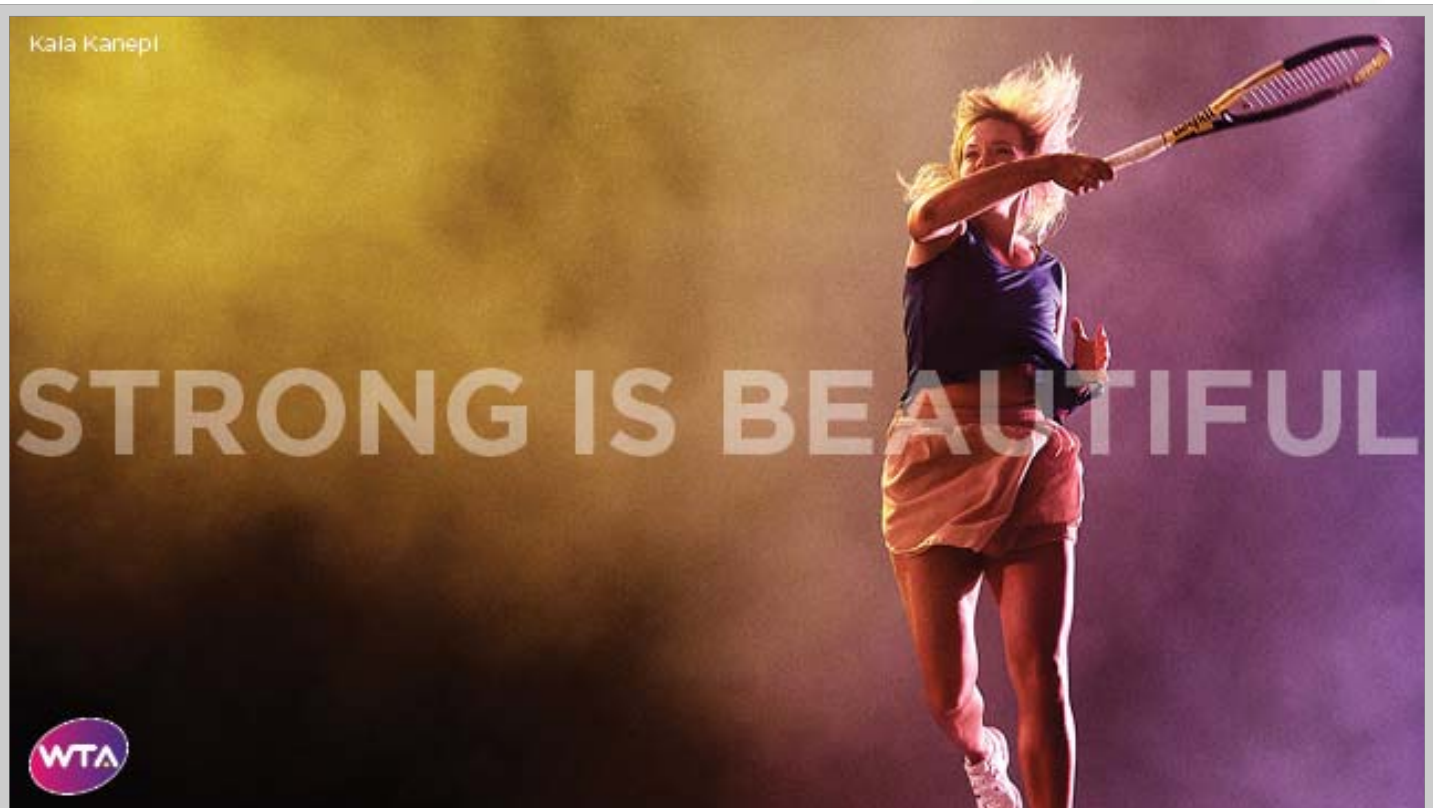
17-15 - (9) Stosur d. (25) Kirilenko 62 67(15) 63 (US Open 4r)

### 'Double Bagels' (60 60) - 10 times (2010 - 11 times)

Bartoli d. Garbin (Australian Open 1r)  
Clijsters d. Safina (Australian Open 1r),  
Azarenka d. Dushevina (Madrid 1r)  
Mayr-Achleitner d. Pervak (Bad Gastein SF)  
Voskoboeva d. Shapatava (Baku 1r)  
Mikadze d. Khrisanova (Baku 1r)  
S.Williams d. Rodionova (Stanford 1r)  
McHale d. Scandalis (Carlsbad 1r)  
Azarenka d. Dubois (Toronto 2r)  
Rodionova d. Hercog (Cincinnati 1r)

### Match points saved en route to title - 8 times (2010 - 3 times)

5 - Arn d. Arvidsson 46 75 75 (Auckland 2r - 5mp at 64 53)  
1 - Kvitova d. Zahlavova Strycova 64 67(6) 76(9) (Paris [Indoors] 2r - 1mp at 6-5 third set)  
4 - Rybarikova d. King 61 36 76(9) (Memphis 1r - 2mp at 5-4 third set, 2mp at 7-6 and 8-7 in TB)  
2 - Dokic d. Safarova 26 76(9) 64 (Kuala Lumpur F - 2mp at 6-5 and 8-7 in TB)  
1 - Bartoli d. Safarova 63 36 76(7) (Eastbourne 1r - 1mp at 6-5 in TB)  
1 - Hercog d. Rezaei 36 64 76(4) (Bastad 2r - 1mp at 6-5 third set)  
2 - Vinci d. Kucova 46 76(3) 63 (Budapest QF - 2mp at 64 52)  
1 - Scheepers d. Hsieh 36 76(1) 61 (Guangzhou 2r - 1mp at 63 65)



<http://www.wtatennis.com/page/strongisbeautiful/>

## Notes & Netcords

© 2011, WTA Tour, Inc. All rights reserved.

Editor: John Berkok (jberkok@wtatennis.com)

Notes & Netcords is produced by the Communications Department of the WTA.

**SVP, Global Marketing & Communications**  
**Senior Director, Communications & Lifestyle PR**  
**Senior Director, Corporate Communications**  
**Director, Communications (Europe)**  
**Director, Creative Services & Communications**  
**Senior Manager, Communications**  
**Senior Manager, Communications**  
**Senior Manager, Communications**  
**Senior Manager, Communications**  
**Manager, Communications & Statistics**  
**Manager, Communications, Asia-Pacific**  
**Manager, Website & Publications**

Andrew Walker  
 Amy Binder  
 Mary Jane Orman  
 Ben Wyatt  
 Gina Clement  
 Kevin Fischer  
 Katie Scott  
 Neil Robinson  
 Eloise Tyson  
 Vani Vosburgh  
 Yanyan Xu  
 John Berkok

### CORPORATE HEADQUARTERS

One Progress Plaza / Suite 1500 / St. Petersburg, FL, USA / 33701  
 Tel: +1.727.895.5000 / Fax: +1.727.894.1982

### EUROPEAN HEADQUARTERS

Palliser House / Palliser Road / London, UK / W14 9EB  
 Tel: +44.20.7386.4100 / Fax: +44.20.7386.4102

### ASIA-PACIFIC HEADQUARTERS

Vantone Center / Suite 601, Tower C / No.6A, Chaowai Ave. / Beijing, China / 100020  
 Tel: +86.10.5910.2700 / Fax: +86.10.5910.2799

## 2011 WTA CALENDAR

27 December	
3 January	Brisbane / Auckland
10 January	Sydney / Hobart
17 January	<b>Australian Open</b>
24 January	<b>Australian Open</b>
31 January	Fed Cup I
7 February	Paris [Indoors] / Pattaya City
14 February	Dubai / Memphis / Bogotá
21 February	Doha / Acapulco
28 February	Monterrey / Kuala Lumpur
7 March	Indian Wells
14 March	Indian Wells
21 March	Miami
28 March	Miami
4 April	Charleston / Marbella
11 April	Fed Cup II
18 April	Stuttgart / Fès
25 April	Barcelona / Estoril
2 May	Madrid
9 May	Rome
16 May	Brussels / Strasbourg
23 May	<b>Roland Garros</b>
30 May	<b>Roland Garros</b>
6 June	Copenhagen / Birmingham
13 June	Eastbourne / 's-Hertogenbosch
20 June	<b>Wimbledon</b>
27 June	<b>Wimbledon</b>
4 July	Bastad / Budapest
11 July	Bad Gastein / Palermo
18 July	Baku
25 July	Stanford / College Park
1 August	Carlsbad
8 August	Toronto
15 August	Cincinnati
22 August	New Haven / Dallas
29 August	<b>US Open</b>
5 September	<b>US Open</b>
12 September	Québec City / Tashkent
19 September	Seoul / Guangzhou
26 September	<u>Tokyo</u>
3 October	Beijing
10 October	Linz / Osaka
17 October	Moscow / Luxembourg
24 October	Istanbul [SEC]
31 October	Bali / Fed Cup Final

## WTA OFFICIAL PARTNERS



**Sony Ericsson**  
 Lead Global Sponsor



**Dubai Duty Free**  
 Premier Sponsor  
 Middle East / Asia Pacific

Get online at  
<http://www.wtatennis.com/>  
**THE OFFICIAL WEBSITE OF**  
**THE WTA**

# WTA Singles Rankings

RANK DATE: 26 September 2011



RANK	PRIOR RANK	NAME	NAT	RANKING POINTS	# TRN	POINTS ADDED	NEXT OFF	16TH TOURN	17TH TOURN
1	(1)	WOZNIACKI, CAROLINE	DEN	9335	22		900	320	320
2	(2)	SHARAPOVA, MARIA	RUS	6226	15		1		
3	(3)	AZARENKA, VICTORIA	BLR	6055	21		395	125	120
4	(4)	ZVONAREVA, VERA	RUS	5920	21		225	130	125
5	(5)	LI, NA	CHN	5870	19			60	1
6	(6)	KVITOVA, PETRA	CZE	5530	20		1	30	1
7	(7)	STOSUR, SAMANTHA	AUS	5380	21		1	70	60
8	(8)	SCHIAVONE, FRANCESCA	ITA	4775	22	1	395	125	60
9	(9)	CLIJSTERS, KIM	BEL	4501	15				
10	(10)	BARTOLI, MARION	FRA	4225	26	30	125	130	125
11	(11)	PETKOVIC, ANDREA	GER	4025	21		125	120	120
12	(12)	JANKOVIC, JELENA	SRB	3270	22		125	125	60
13	(13)	RADWANSKA, AGNIESZKA	POL	3270	18		225	60	1
14	(14)	WILLIAMS, SERENA	USA	3180	13				
15	(15)	PENG, SHUAI	CHN	2825	24		1	130	120
16	(16)	PAVLYUCHENKOVA, ANASTASIA	RUS	2720	22		125	60	30
17	(17)	LISICKI, SABINE	GER	2650	20			6	1
18	(18)	VINCI, ROBERTA	ITA	2505	28		155	130	70
19	(19)	KUZNETSOVA, SVETLANA	RUS	2481	19		70	1	1
20	(21)	GOERGES, JULIA	GER	2435	26	70	125	70	30
21	(20)	IVANOVIC, ANA	SRB	2415	21		70	70	70
22	(22)	CIBULKOVA, DOMINIKA	SVK	2205	22	70	1	60	30
23	(23)	PENNETTA, FLAVIA	ITA	2140	21		125	70	30
24	(24)	WICKMAYER, YANINA	BEL	2140	23		1	75	70
25	(25)	HANTUCHOVA, DANIELA	SVK	2065	27		70	120	120
26	(26)	PEER, SHAHAR	ISR	1975	22		70	60	60
27	(28)	KIRILENKO, MARIA	RUS	1945	24	130	70	40	40
28	(27)	SAFAROVA, LUCIE	CZE	1870	24		70	60	30
29	(30)	MEDINA GARRIGUES, ANABEL	ESP	1765	24		1	70	50
30	(29)	PETROVA, NADIA	RUS	1721	21		1	1	1
31	(31)	CETKOVSKA, PETRA	CZE	1686	21			14	10
32	(36)	MARTINEZ SANCHEZ, MARIA JOSE	ESP	1660	22	280	20	20	20
33	(33)	KERBER, ANGELIQUE	GER	1642	22		1	1	1
34	(34)	GAJDOSOVA, JARMILA	AUS	1575	27	70	20	30	24
35	(35)	HERCOG, POLONA	SLO	1530	29	130	1	40	30
36	(32)	KLEYBANOVA, ALISA	RUS	1376	19		1	1	1
37	(37)	PERVAK, KSENIA	RUS	1355	27	1		30	20
38	(38)	BEGU, IRINA-CAMELIA	ROU	1268	21	30	14	14	14
39	(40)	ERRANI, SARA	ITA	1265	27		70	70	70
40	(41)	HALEP, SIMONA	ROU	1228	28		20	10	1
41	(73)	SCHEEPERS, CHANELLE	RSA	1216	29	280	1	1	1
42	(44)	MORITA, AYUMI	JPN	1193	29	1	1	40	30
43	(46)	KANEPI, KAIA	EST	1177	18		225	1	1
44	(42)	MAKAROVA, EKATERINA	RUS	1168	24	1	30	8	1
45	(47)	PIRONKOVA, TSVETANA	BUL	1162	23		70	1	1
46	(49)	ZAHLAVOVA STRYCOVA, BARBORA	CZE	1160	30		1	30	30
47	(55)	MARTIC, PETRA	CRO	1157	23	70	32	12	2
48	(43)	ZAKOPALOVA, KLARA	CZE	1155	27	130	1	70	60
49	(50)	HRADECKA, LUCIE	CZE	1151	26	40		20	16
50	(72)	RYBARIKOVA, MAGDALENA	SVK	1114	23	200	110	18	16

# WTA Singles Rankings

RANK DATE: 26 September 2011



RANK	PRIOR RANK	NAME	NAT	RANKING POINTS	# TRN	POINTS ADDED	NEXT OFF	16TH TOURN	17TH TOURN
51	(51)	MCHALE, CHRISTINA	USA	1107	27		30	16	15
52	(52)	MATTEK-SANDS, BETHANIE	USA	1107	14				
53	(39)	VESNINA, ELENA	RUS	1105	24			30	12
54	(54)	PASZEK, TAMIRA	AUT	1103	23			20	16
55	(48)	MARINO, REBECCA	CAN	1099	24			8	6
56	(57)	BENESOVA, IVETA	CZE	1090	26	30	30	20	8
57	(56)	JOVANOVSKI, BOJANA	SRB	1083	30	1	1	40	30
58	(45)	NICULESCU, MONICA	ROU	1071	23			18	12
59	(53)	DULGHERU, ALEXANDRA	ROU	1066	22	30	70	1	1
60	(58)	BRIANTI, ALBERTA	ITA	1061	30	1	150	30	30
61	(60)	SUAREZ NAVARRO, CARLA	ESP	1056	21	30		30	20
62	(62)	LARSSON, JOHANNA	SWE	1054	26	40		30	30
63	(65)	DUSHEVINA, VERA	RUS	1040	21	70	20	20	8
64	(59)	BALTACHA, ELENA	GBR	1040	25		20	20	20
65	(82)	VOSKOBOEVA, GALINA	KAZ	1027	17	200		1	1
66	(64)	PARMENTIER, PAULINE	FRA	1005	27		20	20	20
67	(66)	DULKO, GISELA	ARG	999	20		1	1	1
68	(61)	DATE-KRUMM, KIMIKO	JPN	995	27	1	125	20	8
69	(67)	ARN, GRETA	HUN	995	21		100	20	12
70	(68)	YAKIMOVA, ANASTASIYA	BLR	989	31	1		18	12
71	(63)	ERAKOVIC, MARINA	NZL	981	19			4	1
72	(70)	DOKIC, JELENA	AUS	973	22		1	1	1
73	(69)	DOMINGUEZ LINO, LOURDES	ESP	966	23			6	1
74	(71)	BONDARENKO, KATERYNA	UKR	960	24		70	20	20
75	(83)	ZHENG, JIE	CHN	955	22	130		20	1
76	(78)	JOHANSSON, MATHILDE	FRA	947	24	80		30	20
77	(80)	BARTHEL, MONA	GER	946	25	110		16	14
78	(76)	POUS-TIO, LAURA	ESP	930	29	40	100	40	36
79	(75)	FALCONI, IRINA	USA	927	30	1	6	20	14
80	(77)	SEVASTOVA, ANASTASIJA	LAT	917	23	1	1	1	1
81	(86)	CIRSTEA, SORANA	ROU	915	27	150	50	30	20
82	(79)	RUS, ARANTXA	NED	853	25	1		10	10
83	(90)	SOLER-ESPINOSA, SILVIA	ESP	850	23	110		6	6
84	(81)	ARVIDSSON, SOFIA	SWE	845	24			30	30
85	(84)	DANIILIDOU, ELENI	GRE	827	24	30	70	10	6
86	(88)	MIRZA, SANIA	IND	765	24			1	1
87	(99)	WATSON, HEATHER	GBR	765	26	78		20	12
88	(105)	RADWANSKA, URSZULA	POL	759	25	70	1	12	8
89	(96)	TATISHVILI, ANNA	GEO	758	30	78	18	18	18
90	(98)	KING, VANIA	USA	757	20	70	20	1	1
91	(89)	BARROIS, KRISTINA	GER	741	28	1	18	30	24
92	(94)	HLAVACKOVA, ANDREA	CZE	739	28			6	1
93	(95)	TANASUGARN, TAMARINE	THA	739	20	1		1	1
94	(91)	STEPHENS, SLOANE	USA	729	24			1	1
95	(97)	MAYR-ACHLEITNER, PATRICIA	AUT	726	30	1	8	12	8
96	(104)	KEOTHAVONG, ANNE	GBR	714	29	30		18	16
97	(101)	VANDEWEGHE, COCO	USA	706	24		255	1	1
98	(103)	FORETZ GACON, STEPHANIE	FRA	703	28		1	24	20
99	(85)	CORNET, ALIZE	FRA	693	25			1	1
100	(106)	REZAI, ARAVANE	FRA	690	25	30	70	30	30

# WTA Doubles Rankings



RANK DATE: 26 September 2011

RANK	PRIOR RANK	NAME	NAT	RANKING POINTS	# TRN	POINTS ADDED	NEXT OFF	11TH TOURN	12TH TOURN
1	(1)	HUBER, LIEZEL	USA	8155	24		395	320	250
2	(2)	PESCHKE, KVETA	CZE	8075	22		225	395	395
2	(2)	SREBOTNIK, KATARINA	SLO	8075	22		225	395	395
4	(4)	PENNETTA, FLAVIA	ITA	6795	18		225	225	225
5	(5)	DULKO, GISELA	ARG	6795	15		225	225	225
6	(6)	RAYMOND, LISA	USA	6755	21		395	225	140
7	(7)	KIRILENKO, MARIA	RUS	6355	18		1	195	120
8	(8)	SHVEDOVA, YAROSLAVA	KAZ	6170	17		1	70	36
9	(9)	KING, VANIA	USA	6150	17		1	130	5
10	(10)	MIRZA, SANIA	IND	5205	20			130	120
11	(11)	VESNINA, ELENA	RUS	4946	16			1	1
12	(12)	PETROVA, NADIA	RUS	4915	17		1	195	140
13	(13)	AZARENKA, VICTORIA	BLR	4893	11		1	1	
14	(14)	HLAVACKOVA, ANDREA	CZE	4245	22			70	70
15	(15)	HRADECKA, LUCIE	CZE	4090	22			125	70
16	(16)	ZAHLAVOVA STRYCOVA, BARBORA	CZE	4000	24		900	200	200
17	(17)	PENG, SHUAI	CHN	3635	15		620	120	80
18	(18)	BENESOVA, IVETA	CZE	3600	20	130	900	130	125
19	(19)	MARTINEZ SANCHEZ, MARIA JOSE	ESP	3505	20	70	1	160	140
20	(20)	MATTEK-SANDS, BETHANIE	USA	3490	14			160	140
21	(21)	SHAUGHNESSY, MEGHANN	USA	3350	12			140	70
22	(22)	RADWANSKA, AGNIESZKA	POL	3271	10				
23	(23)	ERRANI, SARA	ITA	3165	25		1	200	200
24	(24)	HANTUCHOVA, DANIELA	SVK	3112	11			1	
25	(25)	ZHENG, JIE	CHN	3075	14			120	5
26	(26)	VINCI, ROBERTA	ITA	3045	24		1	200	140
27	(28)	GRANDIN, NATALIE	RSA	3015	30	280	1	150	140
28	(29)	UHLIROVA, VLADIMIRA	CZE	3015	34	280	1	150	140
29	(27)	GOVORTSOVA, OLGA	BLR	2990	21			5	5
30	(30)	CHUANG, CHIA-JUNG	TPE	2930	19	70		5	5
31	(31)	PARRA SANTONJA, ARANTXA	ESP	2805	22			70	70
32	(32)	LLAGOSTERA VIVES, NURIA	ESP	2755	18		1	160	140
33	(33)	RODIONOVA, ANASTASIA	AUS	2675	24	70	1	120	70
34	(34)	MEDINA GARRIGUES, ANABEL	ESP	2615	18		1	140	120
35	(37)	VOSKOBOEVA, GALINA	KAZ	2525	15	200		130	24
36	(35)	STOSUR, SAMANTHA	AUS	2501	8				
37	(36)	PEER, SHAHAR	ISR	2400	16		620	5	5
38	(41)	HSIEH, SU-WEI	TPE	2295	21	280	1	110	70
39	(38)	DUSHEVINA, VERA	RUS	2285	21	200		120	120
40	(39)	ROSOLSKA, ALICJA	POL	2175	29	130	1	130	125
41	(40)	KUDRYAVTSEVA, ALLA	RUS	2135	24			120	70
42	(43)	JANS-IGNACIK, KLAUDIA	POL	2020	28	130	1	125	120
43	(50)	CHAN, YUNG-JAN	TPE	1933	19	130	395	18	14
44	(44)	SPEARS, ABIGAIL	USA	1930	30		32	120	120
45	(45)	KOPS-JONES, RAQUEL	USA	1930	27			120	110
46	(46)	LISICKI, SABINE	GER	1910	7				
47	(47)	GAJDOSOVA, JARMILA	AUS	1880	20	70		70	70
48	(42)	GOERGES, JULIA	GER	1880	21		1	120	110
49	(48)	STUBBS, RENNAE	AUS	1842	11		395	1	
50	(49)	VORACOVA, RENATA	CZE	1840	26			130	110

# WTA PRIZE MONEY LEADERS

As of: Sep 19, 2011



STANDING	NAME	NAT	SINGLES	DOUBLES	MIXED	TOTAL
1	KVITOVA, PETRA	CZE	3,234,059	12,476	2,458	3,248,993
2	LI, NA	CHN	3,247,322			3,247,322
3	SHARAPOVA, MARIA	RUS	2,747,698			2,747,698
4	WOZNIACKI, CAROLINE	DEN	2,744,756	825		2,745,581
5	STOSUR, SAMANTHA	AUS	2,509,808	145,780	1,040	2,656,628
6	AZARENKA, VICTORIA	BLR	2,233,264	352,693		2,585,957
7	CLIJSTERS, KIM	BEL	2,325,741			2,325,741
8	WILLIAMS, SERENA	USA	1,978,930			1,978,930
9	SCHIAVONE, FRANCESCA	ITA	1,488,650	36,348		1,524,998
10	ZVONAREVA, VERA	RUS	1,411,456	45,737		1,457,193
11	BARTOLI, MARION	FRA	1,420,638			1,420,638
12	PETKOVIC, ANDREA	GER	1,150,337	58,322	5,862	1,214,521
13	RADWANSKA, AGNIESZKA	POL	832,172	242,716		1,074,888
14	PENNETTA, FLAVIA	ITA	602,076	328,290	4,958	935,324
15	LISICKI, SABINE	GER	768,770	127,189		895,959
16	KIRILENKO, MARIA	RUS	412,990	422,304	16,223	851,517
17	PENG, SHUAI	CHN	698,598	150,163		848,761
18	PAVLYUCHENKOVA, ANASTASIA	RUS	763,143	49,891		813,034
19	KUZNETSOVA, SVETLANA	RUS	755,918	36,467		792,385
20	JANKOVIC, JELENA	SRB	749,111	31,190		780,301
21	PETROVA, NADIA	RUS	433,062	269,848	24,216	727,126
22	HANTUCHOVA, DANIELA	SVK	490,085	231,452	5,000	726,537
23	GOERGES, JULIA	GER	613,589	77,051		690,640
24	VESNINA, ELENA	RUS	263,062	352,707	58,418	674,187
25	SREBOTNIK, KATARINA	SLO		507,790	104,957	612,747
26	DULKO, GISELA	ARG	254,517	319,590	35,000	609,107
27	KERBER, ANGELIQUE	GER	568,863	27,576		596,439
28	HUBER, LIEZEL	USA		572,580	19,351	591,931
29	VINCI, ROBERTA	ITA	460,096	119,561	1,702	581,359
30	CIBULKOVA, DOMINIKA	SVK	556,035	25,227		581,262
31	WICKMAYER, YANINA	BEL	536,368	23,826		560,194
32	MIRZA, SANIA	IND	176,664	358,812	13,358	548,834
33	HRADECKA, LUCIE	CZE	211,271	297,124	17,080	525,475
34	PESCHKE, KVETA	CZE		507,790	8,698	516,488
35	KING, VANIA	USA	208,740	299,638	7,700	516,078
36	MATTEK-SANDS, BETHANIE	USA	293,251	175,149	15,183	483,583
37	BENESOVA, IVETA	CZE	271,743	111,525	85,229	468,497
38	MEDINA GARRIGUES, ANABEL	ESP	347,070	108,352	6,618	462,040
39	SAFAROVA, LUCIE	CZE	424,026	34,535		458,561
40	MARTINEZ SANCHEZ, MARIA JOSE	ESP	294,738	153,912		448,650
41	PEER, SHAHAR	ISR	357,579	80,703	8,400	446,682
42	HLAVACKOVA, ANDREA	CZE	129,326	306,131	4,580	440,037
43	GAJDOSOVA, JARMILA	AUS	346,383	63,899	28,838	439,120
44	IVANOVIC, ANA	SRB	415,650	20,825	2,500	438,975
45	PIRONKOVA, TSVETANA	BUL	409,262	25,506		434,768
46	MAKAROVA, EKATERINA	RUS	350,856	66,131	10,169	427,156
47	RAYMOND, LISA	USA		410,092	11,240	421,332
48	ZAHLAVOVA STRYCOVA, BARBORA	CZE	275,668	121,495	17,989	415,152
49	SHVEDOVA, YAROSLAVA	KAZ	94,647	293,790	4,580	393,017
50	ERRANI, SARA	ITA	267,375	117,441	3,493	388,309



# HANSOL KOREA OPEN

## MAIN DRAW SINGLES

Seoul, Korea 17-25 September 2011

Hard, Deco Turf

\$220,000

WTA International

1 WC	1	<b>SCHIAVONE, Francesca</b>	<b>ITA</b>						
	2	DUSHEVINA, Vera	RUS	V. DUSHEVINA	76(4) 62				
	3	RUS, Arantxa	NED	V. DUSHEVINA	63 61				
	4	DULGHERU, Alexandra	ROU	A. DULGHERU	26 60 75				
	5	BENESOVA, Iveta	CZE	G. VOSKOBOEVA	62 63				
	6	YAKIMOVA, Anastasiya	BLR	I. BENESOVA	63 62				
	7	VOSKOBOEVA, Galina	KAZ	G. VOSKOBOEVA	64 64				
<b>8</b>	<b>8</b>	<b>MAKAROVA, Ekaterina</b>	<b>RUS</b>	G. VOSKOBOEVA	64 64				
<b>4 WC</b>	<b>9</b>	<b>CIBULKOVA, Dominika</b>	<b>SVK</b>						
	10	PARRA SANTONJA, Arantxa	ESP	<b>D. CIBULKOVA [4]</b>	63 75				
	11	TANASUGARN, Tamarine	THA	<b>D. CIBULKOVA [4]</b>	76(4) 00 Ret'd				
<b>Q</b>	12	SHVEDOVA, Yaroslava	KAZ	Y. SHVEDOVA	62 60				
	13	SUAREZ NAVARRO, Carla	ESP	<b>P. HERCOG [5]</b>	63 61				
	14	BIRNEROVA, Eva	CZE	C. SUAREZ NAVARRO	64 64				
	15	KUCOVA, Zuzana	SVK	<b>P. HERCOG [5]</b>	63 75				
<b>5</b>	<b>16</b>	<b>HERCOG, Polona</b>	<b>SLO</b>	<b>P. HERCOG [5]</b>	60 62				
<b>6</b>	<b>17</b>	<b>MARTINEZ SANCHEZ, Maria Jose</b>	<b>ESP</b>						
	18	FALCONI, Irina	USA	<b>M. MARTINEZ SANCHEZ [6]</b>	63 63				
<b>Q</b>	19	ROTTMANN, Nicole	AUT	<b>M. MARTINEZ SANCHEZ [6]</b>	76(5) 62				
<b>Q</b>	20	PLISKOVA, Kristyna	CZE	K. PLISKOVA	61 75				
	21	DANIILIDOU, Eleni	GRE	<b>M. MARTINEZ SANCHEZ [6]</b>	76(6) 61				
<b>WC</b>	22	KIM, So-Jung	KOR	E. DANIILIDOU	46 62 75				
<b>Q</b>	23	SEMA, Yurika	JPN	<b>J. GOERGES [3]</b>	64 75				
<b>3</b>	<b>24</b>	<b>GOERGES, Julia</b>	<b>GER</b>	<b>J. GOERGES [3]</b>	61 61				
<b>7</b>	<b>25</b>	<b>BEGU, Irina-Camelia</b>	<b>ROU</b>						
	26	AMANMURADOVA, Akgul	UZB	<b>I. BEGU [7]</b>	61 63				
	27	MORITA, Ayumi	JPN	K. ZAKOPALOVA	61 61				
	28	ZAKOPALOVA, Klara	CZE	<b>K. ZAKOPALOVA</b>	63 64				
	29	KING, Vania	USA	K. ZAKOPALOVA	62 46 61				
	30	DATE-KRUMM, Kimiko	JPN	V. KING	62 62				
	31	LLAGOSTERA VIVES, Nuria	ESP	V. KING	63 75				
<b>2 WC</b>	<b>32</b>	<b>BARTOLI, Marion</b>	<b>FRA</b>	<b>M. BARTOLI [2]</b>	62 62				

**Maria Jose MARTINEZ SANCHEZ [6]**  
**76(0) 76(2)**



Hansol Korea Open

Seeded Players	Rank	Prize Money	Pts.	Lucky Losers	Retirements/W.O.
1 SCHIAVONE, Francesca	8	Winner	\$37,000	280	Shvedova, Yaroslava - Adductor strain
2 BARTOLI, Marion	10	Finalist	\$19,000	200	
3 GOERGES, Julia	21	Semi-Finalist	\$10,200	130	
4 CIBULKOVA, Dominika	22	Quarter-Finalist	\$5,340	70	
5 HERCOG, Polona	35	2nd Round	\$2,950	30	
6 MARTINEZ SANCHEZ, Maria Jose	36	1st Round	\$1,725	1	
7 BEGU, Irina-Camelia	38				
8 MAKAROVA, Ekaterina	43				
		<b>Last Direct Acceptance</b>	<b>Players Representative</b>		<b>WTA Supervisor</b>
		Galina Voskoboeva - 135	Erika Takao / Chia-Jung Chuang		Mariana Alves

Follow Live Scoring at [www.wtatour.com](http://www.wtatour.com)



# MAIN DRAW DOUBLES

# HANSOL KOREA OPEN

Seoul, Korea 17-25 September 2011

Hard, Deco Turf

\$220,000

WTA International

<b>1</b>	1	<b>GRANDIN, Natalie</b> <b>UHLIROVA, Vladimira</b>	<b>RSA</b> <b>CZE</b>	<b>N. GRANDIN</b> <b>V. UHLIROVA [1]</b> 64 62	
	<b>WC</b>	2	CHOI, Ji-Hee HONG, Seung-Yeon		
	3	JUGIC-SALKIC, Mervana LAINE, Emma	<b>BIH</b> <b>FIN</b>	<b>N. GRANDIN</b> <b>V. UHLIROVA [1]</b> 76(6) 36 10-7	
	4	BIRNEROVA, Eva DANIILIDOU, Eleni	<b>CZE</b> <b>GRE</b>		
	5	<b>BENESOVA, Iveta</b> <b>ZAKOPALOVA, Klara</b>	<b>CZE</b> <b>CZE</b>	<b>I. BENESOVA</b> <b>K. ZAKOPALOVA [3]</b> 62 61	
<b>WC</b>	6	HAN, Sung-Hee KIM, So-Jung	<b>KOR</b> <b>KOR</b>		
	7	PLISKOVA, Karolina PLISKOVA, Kristyna	<b>CZE</b> <b>CZE</b>	<b>I. BENESOVA</b> <b>K. ZAKOPALOVA [3]</b> 62 76(6)	
	8	CHUANG, Chia-Jung DATE-KRUMM, Kimiko	<b>TPE</b> <b>JPN</b>		
	9	BEGU, Irina-Camelia HERCOG, Polona	<b>ROU</b> <b>SLO</b>	<b>C. CHUANG</b> <b>K. DATE-KRUMM</b> 63 63	
	10	MARTINEZ SANCHEZ, Maria Jose SCHIAVONE, Francesca	<b>ESP</b> <b>ITA</b>		
	11	TAKAO, Erika TEZUKA, Remi	<b>JPN</b> <b>JPN</b>	<b>M. MARTINEZ SANCHEZ</b> <b>F. SCHIAVONE</b> 36 75 10-8	
	12	<b>JANS-IGNACIK, Klaudia</b> <b>ROSOLSKA, Alicja</b>	<b>POL</b> <b>POL</b>		
<b>4</b>	13	AOYAMA, Shuko FUJIWARA, Rika	<b>JPN</b> <b>JPN</b>	<b>K. JANS-IGNACIK</b> <b>A. ROSOLSKA [4]</b> 62 61	
	14	DULGHERU, Alexandra TANASUGARN, Tamarine	<b>ROU</b> <b>THA</b>		
	15	AMANMURADOVA, Akgul MAKAROVA, Ekaterina	<b>UZB</b> <b>RUS</b>	<b>V. DUSHEVINA</b> <b>G. VOSKOBOEVA [2]</b> 63 64	
	16	<b>DUSHEVINA, Vera</b> <b>VOSKOBOEVA, Galina</b>	<b>RUS</b> <b>KAZ</b>		

**N. GRANDIN/V. UHLIROVA [1]**  
**76(5) 64**

**V. DUSHEVINA**  
**G. VOSKOBOEVA [2]**  
63 64



Hansol Korea Open

Seeded Players	Rank	Prize Money (Per Team)	Pts.	Alternates	Retirements/W.O.
1 GRANDIN, Natalie / UHLIROVA, Vladimira	57	Winner \$11,000	280		M.J. Martinez Sanchez / F. Schiavone (Francesca Schiavone - Chest cold)
2 DUSHEVINA, Vera / VOSKOBOEVA, Galina	75	Finalist \$5,750	200		
3 BENESOVA, Iveta / ZAKOPALOVA, Klara	82	Semi-Finalist \$3,100	130		
4 JANS-IGNACIK, Klaudia / ROSOLSKA, Alicja	82	Quarter-Finalist \$1,650	70		
		First Round \$860	1		
		<b>Last Direct Acceptance</b>	<b>Player Representative</b>		<b>WTA Supervisor</b>
		Takau/Tezuka - 486	Alicja Rosolska		Mariana Alves

Follow Live Scoring at [www.wtatour.com](http://www.wtatour.com)

# HANSOL KOREA OPEN



## QUALIFYING SINGLES

Seoul, Korea 17-25 September 2011

Hard, Deco Turf

\$220,000

WTA International

9	1	<b>TAKAO, Erika</b>	<b>JPN</b>			
	2	GRANDIN, Natalie	RSA	N. GRANDIN	64 76(3)	
	3	FUDA, Ryoko	JPN	R. FUDA	06 76(4) 63	
	4	AOYAMA, Shuko	JPN	R. FUDA	64 26 64	
<b>WC</b>	5	HONG, Seung-Yeon	KOR	N. ROTTMANN	63 62	
	6	ROTTMANN, Nicole	AUT	N. ROTTMANN	36 60 76(4)	
<b>WC</b>	7	SONG, Ah	KOR	K. PLISKOVA [5]	63 62	
5	8	<b>PLISKOVA, Karolina</b>	<b>CZE</b>			
2	9	<b>NAMIGATA, Junri</b>	<b>JPN</b>			
	10	WLODARCZAK, Karolina	AUS	J. NAMIGATA [2]	75 26 62	
	11	LAINE, Emma	FIN	E. LAINE	64 64	
	12	HAN, Na-Lae	KOR	E. LAINE	62 60	
	13	LUANGNAM, Nudnida	THA	M. JUGIC-SALKIC	62 75	
	14	JUGIC-SALKIC, Mervana	BIH	M. JUGIC-SALKIC	62 75	
	15	FAFALIOU, Stamatia	GRE	K. PLISKOVA [7]	62 63	
7	16	<b>PLISKOVA, Kristyna</b>	<b>CZE</b>	K. PLISKOVA [7]	61 62	
3	17	<b>FUJIWARA, Rika</b>	<b>JPN</b>			
<b>WC</b>	18	HONG, Hyun Hui	KOR	R. FUJIWARA [3]	62 76(4)	
<b>WC</b>	19	JI, Ha-Young	KOR	R. FUJIWARA [3]	61 61	
<b>WC</b>	20	KIM, Ji-Young	KOR	J. KIM	63 62	
	21	HAN, Sung-Hee	KOR	J. KIM	63 62	
<b>WC</b>	22	OH, Hee Jin	KOR	S. HAN	61 60	
<b>WC</b>	23	CHOI, Ji-Hee	KOR	S. HAN	61 60	
8	24	<b>SHVEDOVA, Yaroslava</b>	<b>KAZ</b>	Y. SHVEDOVA [8]	60 60	
4	25	<b>SEMA, Yurika</b>	<b>JPN</b>			
	26	TEZUKA, Remi	JPN	Y. SEMA [4]	76(5) 62	
<b>WC</b>	27	LEE, So-Ra	KOR	Y. SEMA [4]	62 64	
	28	JANG, Su Jeong	KOR	S. JANG	62 62	
	29	NAKANO, Yumi	JPN	S. JANG	62 62	
<b>WC</b>	30	KIM, Ki Ryang	KOR	Y. NAKANO	60 63	
<b>WC</b>	31	YEA, Hyojung	KOR	Y. NAKANO	60 63	
6	32	<b>DOMACHOWSKA, Marta</b>	<b>POL</b>	M. DOMACHOWSKA [6]	62 60	



Hansol Korea Open

Seeded Players	Rank	Prize Money	Pts.	Alternates	Retirements/W.O.
1 SEMA, Erika	143	Qualifier	16	Ha-Young Ji replacing Erika Sema	
2 NAMIGATA, Junri	181	Finalist	\$860 10	(Playing \$100K+H Ningbo-CHN Final)	
3 FUJIWARA, Rika	186	2nd Round	\$460 6		
4 SEMA, Yurika	188	1st Round	\$265 1		
5 PLISKOVA, Karolina	198				
6 DOMACHOWSKA, Marta	202				
7 PLISKOVA, Kristyna	208				
8 SHVEDOVA, Yaroslava	218				
9 TAKAO, Erika	292				
<b>Last Direct Acceptance</b>				<b>Players Representative</b>	<b>WTA Supervisor</b>
<b>Cut off = Six Additional WC</b>				Marta Domachowska	Mariana Alves
<b>Follow Live Scoring at <a href="http://www.wtatour.com">www.wtatour.com</a></b>					



# WANLIMA Guangzhou International Women's Open 2011

## MAIN DRAW SINGLES

Guangzhou, China Sep 17-24, 2011

Hard, DecoTurf

\$220,000

WTA International

1	1	<b>KIRILENKO, Maria</b>	<b>RUS</b>	<b>M. KIRILENKO [1]</b>			
	2	BONDARENKO, Alona	UKR	64 62			
	3	KORYTTSEVA, Mariya	UKR		<b>M. KIRILENKO [1]</b>		
	4	BREMOND, Iryna	FRA	I. BREMOND 61 63	63 61		
	5	<b>ZHAO, Yi-Jing</b>	<b>CHN</b>	<b>Y. ZHAO</b>			
	6	DOI, Misaki	JPN	64 63			
	7	LUZHANSKA, Tetiana	UKR		<b>T. LUZHANSKA</b>		
	8	<b>JOVANOVSKI, Bojana</b>	<b>SRB</b>	<b>T. LUZHANSKA</b> 63 46 76(4)	64 26 75		
	9	<b>PERVAK, Ksenia</b>	<b>RUS</b>	<b>Y. CHAN</b>			
	10	CHAN, Yung-Jan	TPE	41 Ret'd			
	11	RODIONOVA, Anastasia	AUS		<b>U. RADWANSKA</b>		
	12	RADWANSKA, Urszula	POL	U. RADWANSKA 76(5) 64	26 62 62		
	13	<b>HSIEH, Su-Wei</b>	<b>TPE</b>	<b>S. HSIEH</b>			
	14	LU, Jing-Jing	CHN	60 62			
	15	SEVASTOVA, Anastasija	LAT		<b>C. SCHEEPERS [7]</b>		
	16	<b>SCHEEPERS, Chanelle</b>	<b>RSA</b>	<b>C. SCHEEPERS [7]</b> 75 16 63	46 76(6) 63		
	17	<b>BRIANTI, Alberta</b>	<b>ITA</b>	<b>J. ZHENG</b>			
	18	ZHENG, Jie	CHN	76(3) 64			
	19	ZHENG, Saisai	CHN		<b>J. ZHENG</b>		
	20	LERTCHEEWAKARN, Noppawan	THA	N. LERTCHEEWAKARN 75 60	63 75		
	21	SUN, Sheng-Nan	CHN		<b>J. ZHENG</b>		
	22	DIYAS, Zarina	KAZ	Z. DIYAS 61 64	16 64 63		
	23	CHANG, Kai-Chen	TPE		<b>P. MARTIC [4]</b>		
	24	<b>MARTIC, Petra</b>	<b>CRO</b>	<b>P. MARTIC [4]</b> 64 64	46 62 64		
	25	<b>RYBARIKOVA, Magdalena</b>	<b>SVK</b>	<b>M. RYBARIKOVA [8]</b>			
	26	CRAYBAS, Jill	USA	63 46 62			
	27	ZHANG, Shuai	CHN		<b>M. RYBARIKOVA [8]</b>		
	28	REZAI, Aravane	FRA	A. REZAI 62 76(2)	64 61		
	29	XU, Yi-Fan	CHN		<b>M. RYBARIKOVA [8]</b>		
	30	MINELLA, Mandy	LUX	M. MINELLA 26 76(5) 60	64 63		
	31	HAN, Xinyun	CHN		<b>J. GAJDOSOVA [2]</b>		
	32	<b>GAJDOSOVA, Jarmila</b>	<b>AUS</b>	<b>J. GAJDOSOVA [2]</b> 62 61	46 62 63		
						<b>Chanelle SCHEEPERS [7]</b>	
						62 62	
							<b>M. RYBARIKOVA [8]</b>
							75 63



Seeded Players	Rank	Prize Money	Pts.	Lucky Losers	Retirements/W.O.
1 KIRILENKO, Maria	28	Winner \$37,000	280		Pervak, Ksenia - left shoulder injury
2 GAJDOSOVA, Jarmila	30	Finalist \$19,000	200		
3 PERVAK, Ksenia	52	Semi-Finalist \$10,200	130		
4 MARTIC, Petra	54	Quarter-Finalist \$5,340	70		
5 JOVANOVSKI, Bojana	56	2nd Round \$2,950	30		
6 BRIANTI, Alberta	58	1st Round \$1,725	1		
7 SCHEEPERS, Chanelle	69				
8 RYBARIKOVA, Magdalena	72				
		<b>Last Direct Acceptance</b>	<b>Players Representative</b>		<b>WTA Supervisor</b>
		Han (171)	Kirilenko, Gajdosova & Zhang Shuai		Chen Shu

Follow Live Scoring at [www.wtatour.com](http://www.wtatour.com)



# WANLIMA Guangzhou International Women's Open 2011

## MAIN DRAW DOUBLES

Guangzhou, China Sep 17-24, 2011

Hard, DecoTurf

\$220,000

WTA International

<b>1</b>	1	GAJDOSOVA, Jarmila RODIONOVA, Anastasia	AUS AUS		
					J. GAJDOSOVA A. RODIONOVA [1]
<b>WC</b>	2	PANG, Yang YANG, Zi	CHN CHN		60 60
					H. CHAN Y. CHAN 63 76(1)
	3	CHAN, Hao-Ching CHAN, Yung-Jan	TPE TPE		
	4	CHEN, Yi LERTCHEEWAKARN, Noppawan	TPE THA		H. CHAN Y. CHAN 75 63
<b>3</b>	5	CHANG, Kai-Chen CRAYBAS, Jill	TPE USA		
	6	PERVAK, Ksenia RYBARIKOVA, Magdalena	RUS SVK		K. CHANG J. CRAYBAS [3] wo.
	7	LUZHANSKA, Tetiana XU, Yi-Fan	UKR CHN		C. CHAN X. HAN 75 64
	8	CHAN, Chin-Wei HAN, Xinyun	TPE CHN		C. CHAN X. HAN 60 63
	9	LEFEVRE, Sophie LIU, Wan-Ting	FRA CHN		<b>S. HSIEH/S. ZHENG</b> 62 61
	10	BASUKI, Yayuk LU, Jing-Jing	INA CHN		Y. BASUKI J. LU 63 76(4)
	11	HSIEH, Su-Wei ZHENG, Saisai	TPE CHN		S. HSIEH S. ZHENG 61 61
<b>4</b>	12	KONDRATIEVA, Maria SUN, Sheng-Nan	RUS CHN		S. HSIEH S. ZHENG 61 63
<b>WC</b>	13	LIANG, Chen TIAN, Ran	CHN CHN		S. HSIEH S. ZHENG 63 62
	14	BONDARENKO, Alona KORYTTSEVA, Mariya	UKR UKR		C. LIANG R. TIAN 46 63 12-10
	15	BREMOND, Iryna HSU, Wen-Hsin	FRA TPE		A. BRIANTI P. MARTIC [2] 57 62 10-8
<b>2</b>	16	BRIANTI, Alberta MARTIC, Petra	ITA CRO		A. BRIANTI P. MARTIC [2] 75 75



Seeded Players	Rank	Prize Money (Per Team)	Pts.	Alternates	Retirements/W.O.
1 GAJDOSOVA, Jarmila / RODIONOVA, Anastasia	78	Winner \$11,000	280		K. Pervak / M. Rybarikova - Pervak-Left shoulder injury
2 BRIANTI, Alberta / MARTIC, Petra	183	Finalist \$5,750	200		
3 CHANG, Kai-Chen / CRAYBAS, Jill	189	Semi-Finalist \$3,100	130		
4 KONDRATIEVA, Maria / SUN, Sheng-Nan	204	Quarter-Finalist \$1,650	70		
		First Round \$860	1		
		Last Direct Acceptance Bremond / Hsu (441)	Player Representative Chan Hao-Ching		WTA Supervisor Chen Shu

Follow Live Scoring at [www.wtatour.com](http://www.wtatour.com)



# WANLIMA Guangzhou International Women's Open 2011

## QUALIFYING SINGLES

Guangzhou, China Sep 17-24, 2011

Hard, DecoTurf

\$220,000

WTA International

10	1	CHAN, Chin-Wei	TPE	
	2	BYE		C. CHAN [10]
WC	3	PANG, Yang	CHN	C. CHAN [10] 61 61
WC	4	HUANG, Chu-Xian	CHN	Y. PANG 62 63
	5	YANG, Zi	CHN	Y. XU 61 62
	6	XU, Yi-Fan	CHN	Y. XU 64 75
WC	7	LIU, Wan-Ting	CHN	Y. XU 76(4) 63
7	8	WANG, Qiang	CHN	Q. WANG [7] 64 60
2	9	GOJNEA, Madalina	ROU	M. GOJNEA [2]
	10	BYE		M. GOJNEA [2] 61 63
	11	BYE		R. TIAN
WC	12	TIAN, Ran	CHN	Y. ZHAO 62 63
	13	BYE		Y. CHEN
WC	14	CHEN, Yi	TPE	Y. ZHAO 63 63
WC	15	ZHAO, Yi-Jing	CHN	Y. ZHAO 46 61 76(5)
8	16	HSU, Wen-Hsin	TPE	Z. DIYAS [3]
	17	DIYAS, Zarina	KAZ	Z. DIYAS [3] 36 62 61
	18	BYE		K. BARBAT
	19	BARBAT, Karen	DEN	Z. DIYAS [3] 16 63 75
	20	TAKAYAMA, Chihiro	JPN	Z. DIYAS [3] 75 61
	21	DUAN, Ying-Ying	CHN	N. LERTPITAKSINCHAI [9] 63 60
WC	22	ZHAO, Di	CHN	N. LERTPITAKSINCHAI [9] 62 61
	23	BYE		N. LERTPITAKSINCHAI [9]
9	24	LERTPITAKSINCHAI, Nicha	THA	L. ZHANG [4]
4	25	ZHANG, Ling	HKG	L. ZHANG [4] 62 62
	26	BYE		Z. YAN
	27	HU, Yue-Yue	CHN	S. HSIEH [6] 76(0) 46 61
WC	28	YAN, Zhen	CHN	S. HSIEH [6] 61 64
WC	29	LIANG, Chen	CHN	C. LIANG 60 62
WC	30	XU, Bao Yi	CHN	S. HSIEH [6] 61 64
	31	BYE		S. HSIEH [6]
6	32	HSIEH, Su-Wei	TPE	



Seeded Players	Rank	Prize Money	Pts.	Alternates	Retirements/W.O.
9 LERTPITAKSINCHAI, Nicha	329	Qualifier	16		Lertcheewakarn moved to MD
2 GOJNEA, Madalina	166	Finalist	10		Kudryavtseva W/D due to injury
3 DIYAS, Zarina	169	2nd Round	6		
4 ZHANG, Ling	184	1st Round	1		
10 CHAN, Chin-Wei	370				
6 HSIEH, Su-Wei	213				
7 WANG, Qiang	233				
8 HSU, Wen-Hsin	283				
Last Direct Acceptance				Players Representative	WTA Supervisor
Bye				Zhao Di	Chen Shu

Follow Live Scoring at [www.wtatour.com](http://www.wtatour.com)

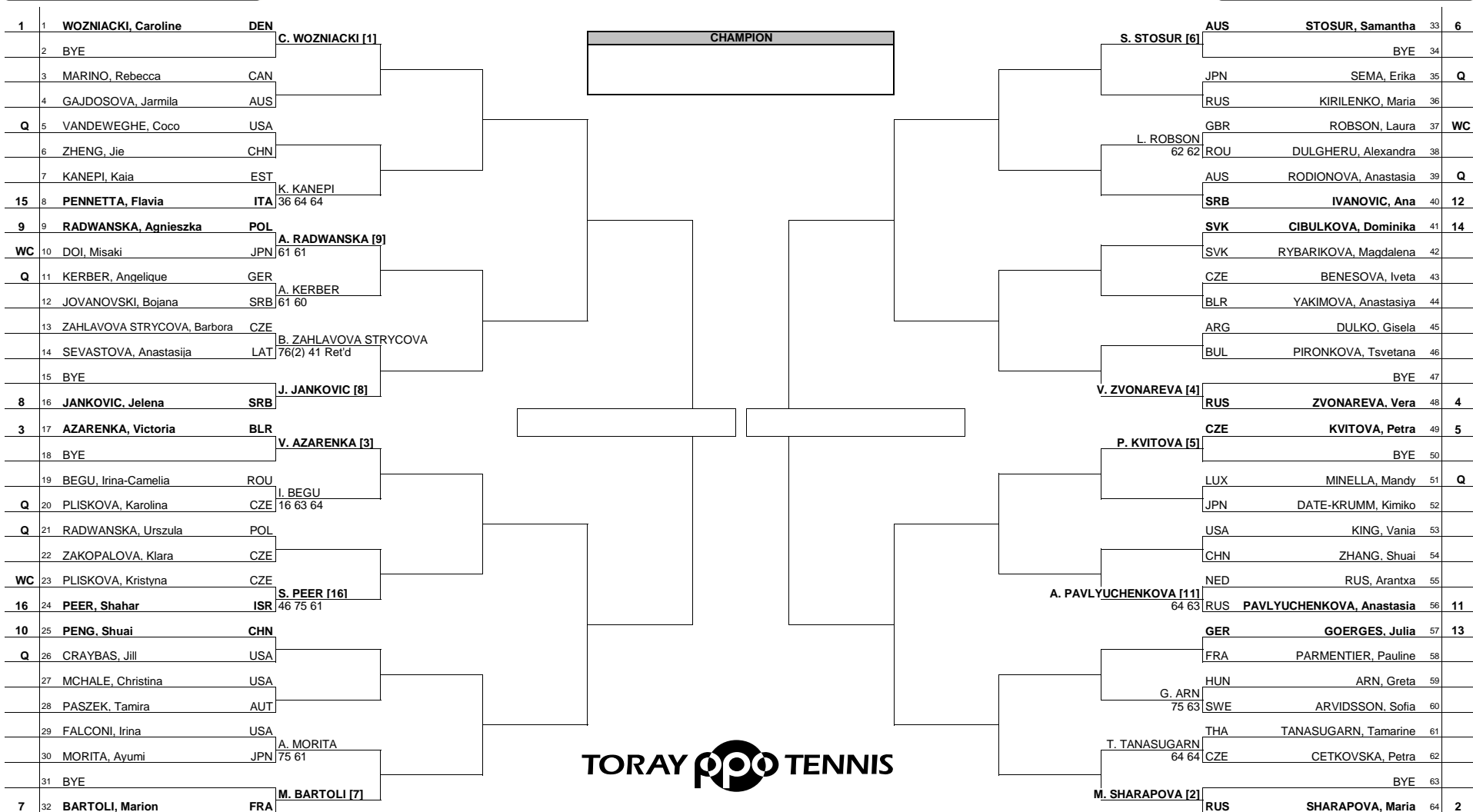
# TORAY PAN PACIFIC OPEN

## MAIN DRAW SINGLES

TOKYO, JAPAN 25 SEP - 01 OCT, 2011

Hard

WTA Premier 5 - \$2,050,000



Seeded Players		Seeded Players		Prize Money		Lucky Losers		Retirements/W.O.	
Rank	Player	Rank	Player	Rank	Prize Money	Pts.	Player	Player	Player
1	WOZNIACKI, Caroline	9	RADWANSKA, Agnieszka	13	Winner	\$360,000	900		Sevastova, Anastasija -
2	SHARAPOVA, Maria	10	PENG, Shuai	15	Finalists	\$180,000	620		
3	AZARENKA, Victoria	11	PAVLYUCHENKOVA, Anastasia	16	Semi-Finalists	\$90,000	395		
4	ZVONAREVA, Vera	4	IVANOVIC, Ana	20	Quarter Finalists	\$41,450	225		
5	KVITOVA, Petra	6	GOERGES, Julia	21	3rd Round	\$20,550	125		
6	STOSUR, Samantha	7	CIBULKOVA, Dominika	14	2nd Round	\$10,575	70		
7	BARTOLI, Marion	15	PENNETTA, Flavia	23	1st Round	\$5,500	1		
8	JANKOVIC, Jelena	12	PEER, Shahar	26					
						Last Direct Acceptance		Players Representative	
						Zhang - 99		Doi / A. Radwanska	
								WTA Supervisor	
								DONNA KELSOP/PAM WHYTCROSS	
								Follow Live Scoring at www.wtatour.com	



# TORAY PAN PACIFIC OPEN

## MAIN DRAW DOUBLES

TOKYO, JAPAN 25 SEP - 01 OCT, 2011

Hard

\$2,050,000

WTA Premier 5

<b>1</b>	1	<b>HUBER, Liezel</b> <b>RAYMOND, Lisa</b>	<b>USA</b> <b>USA</b>	
<b>WC</b>	2	FUJIWARA, Rika MORITA, Ayumi	JPN JPN	
	3	CHAN, Yung-Jan GOERGES, Julia	TPE GER	
<b>Alt</b>	4	RYBARIKOVA, Magdalena ZAKOPALOVA, Klara	SVK CZE	
<b>4</b>	5	<b>AZARENKA, Victoria</b> <b>KIRILENKO, Maria</b>	<b>BLR</b> <b>RUS</b>	
	6	DULGHERU, Alexandra TANASUGARN, Tamarine	ROU THA	
	7	DATE-KRUMM, Kimiko ZHANG, Shuai	JPN CHN	
	8	KOPS-JONES, Raquel SPEARS, Abigail	USA USA	R. KOPS-JONES A. SPEARS 76(5) 64
	9	CHUANG, Chia-Jung PEER, Shahar	TPE ISR	
	10	GRANDIN, Natalie UHLIROVA, Vladimira	RSA CZE	
	11	HSIEH, Su-Wei ZHENG, Jie	TPE CHN	
<b>3</b>	12	<b>KING, Vania</b> <b>SHVEDOVA, Yaroslava</b>	<b>USA</b> <b>KAZ</b>	
	13	JANS-IGNACIK, Klaudia ROSOLSKA, Alicja	POL POL	
	14	BEGU, Irina-Camelia RODIONOVA, Anastasia	ROU AUS	
	15	BENESOVA, Iveta ZAHLAVOVA STRYCOVA, Barbora	CZE CZE	
<b>2</b>	16	<b>DULKO, Gisela</b> <b>PENNETTA, Flavia</b>	<b>ARG</b> <b>ITA</b>	

# TORAY PPO TENNIS

Seeded Players	Rank	Prize Money (Per Team)		Pts.	Alternates	Retirements/W.O.
1 HUBER, Liezel / RAYMOND, Lisa	7	Winner	\$103,000	900	Rybarikova/Zakopalova replacing	
2 DULKO, Gisela / PENNETTA, Flavia	9	Finalist	\$51,550	620	Jovanovski/Rezai	
3 KING, Vania / SHVEDOVA, Yaroslava	17	Semi-Finalist	\$32,350	395	(Rezai - viral illness)	
4 AZARENKA, Victoria / KIRILENKO, Maria	20	Quarter-Finalist	\$16,250	225		
		First Round	\$8,100	1		
		<b>Last Direct Acceptance</b>		<b>Player Representative</b>		<b>WTA Supervisor</b>
		Date-Krumm/Zhang - 114		Anastasia Rodionova		DONNA KELSO/PAM WHYTCROSS
Follow Live Scoring at <a href="http://www.wtatour.com">www.wtatour.com</a>						



# TORAY PAN PACIFIC OPEN

## QUALIFYING SINGLES

TOKYO, JAPAN 25 SEP - 01 OCT, 2011

Hard

\$2,050,000

WTA Premier 5

1	1	KERBER, Angelique	GER	A. KERBER [1]	
	2	TAKAO, Erika	JPN	62 63	A. KERBER [1]
WC	3	TEZUKA, Remi	JPN		61 75
10	4	CHANG, Kai-Chen	TPE	K. CHANG [10]	36 76(2) 61
2	5	VANDEWEGHE, Coco	USA	C. VANDEWEGHE [2]	
	6	NAKAMURA, Aiko	JPN	63 62	C. VANDEWEGHE [2]
	7	SPEARS, Abigail	USA		46 64 63
12	8	GOJNEA, Madalina	ROU	A. SPEARS	75 06 62
3	9	RADWANSKA, Urszula	POL	U. RADWANSKA [3]	
WC	10	SAWAYANAGI, Riko	JPN	64 64	U. RADWANSKA [3]
WC	11	HAMAMURA, Natsumi	JPN		46 62 61
16	12	FUJIWARA, Rika	JPN	R. FUJIWARA [16]	62 62
4	13	REZAI, Aravane	FRA	A. REZAI [4]	
WC	14	KATO, Miyu	JPN	61 26 64	M. MINELLA [11]
WC	15	OZAKI, Riza	JPN		57 75 63
11	16	MINELLA, Mandy	LUX	M. MINELLA [11]	62 76(4)
5	17	CRAYBAS, Jill	USA	J. CRAYBAS [5]	
	18	ISHIZU, Sachie	JPN	75 60	J. CRAYBAS [5]
	19	FUDA, Ryoko	JPN		61 75
15	20	NAMIGATA, Junri	JPN	R. FUDA	64 64
18	21	IJIMA, Kumiko	JPN	K. IJIMA [18]	
WC	22	YONEMURA, Akiko	JPN	61 61	K. PLISKOVA [14]
WC	23	AOYAMA, Shuko	JPN		62 61
14	24	PLISKOVA, Karolina	CZE	K. PLISKOVA [14]	62 62
7	25	RODIONOVA, Anastasia	AUS	A. RODIONOVA [7]	
WC	26	OKA, Ayumi	JPN	62 60	A. RODIONOVA [7]
WC	27	INOUE, Akari	JPN		61 60
13	28	DIYAS, Zarina	KAZ	Z. DIYAS [13]	61 63
8	29	SEMA, Erika	JPN	E. SEMA [8]	
	30	EGUCHI, Misa	JPN	64 61	E. SEMA [8]
WC	31	KOPS-JONES, Raquel	USA		16 61 64
17	32	SEMA, Yurika	JPN	R. KOPS-JONES	61 63

# TORAY PPO TENNIS

Seeded Players	Rank	Prize Money	Pts.	Alternates	
1 KERBER, Angelique	33	Qualifier	30	AOYAMA replaces LUZHANSKA (right thigh strain) TEZUKA replacing ZHANG ( main draw )	
2 VANDEWEGHE, Coco	101	Finalist	12		
3 RADWANSKA, Urszula	105	1st Round	1		
4 REZAI, Aravane	106				
5 CRAYBAS, Jill	117				
6 ZHANG, Shuai	123				
7 RODIONOVA, Anastasia	125				
8 SEMA, Erika	126				
9 LUZHANSKA, Tetiana	140				
10 CHANG, Kai-Chen	152				
11 MINELLA, Mandy	166				
12 GOJNEA, Madalina	168				
13 DIYAS, Zarina	171				
14 PLISKOVA, Karolina	189				
15 NAMIGATA, Junri	194				
16 FUJIWARA, Rika	195				
<b>Last Direct Acceptance</b>				<b>Players Representative</b>	<b>WTA Supervisors</b>
322 - + 3 additional WCs				Gabriela Duch	Donna Kelso/Pam Whytcross

Follow Live Scoring at [www.wtatour.com](http://www.wtatour.com)